



medical / laboratory seating, casework & equipment







Healthcare buildings are changing because the practice of medicine is being administered in new and unique venues. Medical Office Buildings (MOB) today have a more competitive atmosphere when recruiting new patients as well as employees. Uninviting surroundings of old medical facilities, built many years ago, are being rebuilt at a rapid pace. The new designs have warm and inviting elements welcoming patients with a home-like environment. However, this warmth seems to stop at the waiting rooms. The exam rooms still have a one colorway story not reflecting the healthcare trends of today.

Intensa wants to change the current environment by offering one of the largest color stories for the exam room. We have multiple textile collections with extensive color palettes, matching patterns, and non-PVC vinyls. Plus, we accept preapproved COM to match your specific design needs. Our color offering, combined with multiple casework finishes, provides interior designers with unlimited opportunities to incorporate color into the exam room.

Put a little color in your exam with Intensa!



GENERAL PRACTICE EXAM ROOMS

FAMILY PRACTICE

GENERAL PRACTICE

INTERNAL MEDICINE

COMMUNITY HEALTH



Intensa is helping to deliver effective patient and caregiver interaction with one difference...we do it in *style*. The décor shown has all of the products necessary for any general practice, and utilizes a soothing color palette to create an atmosphere of comfort for the patient, staff and physician.

The use of pattern on the exam top prevents the look of a sterile operation table. Incorporating soft taupes and smoky blues into the walls and seating make this room warm and welcoming.

Essentials Casework shown in a rich wood grain and patterned top surface combine to create an exam room with lasting design quality.

*All 420 Series exam tables from Intensa have **pass-through drawers**, so items can be accessed on both sides. The **stirrups** have a **five-position continuous lock** unlike our competitors who only have three positions. A procedure tray is independent of the leg rest and may be accessed easily at any time. All metal construction of the base table provides longevity and recyclability. Intensa stands behind every product!*









Sherwin-Williams Paint

SW 6150
Universal Khaki



SW 6239
Upward



CF Stinson Textiles

420 Exam Bed
Revolve Angie
RV O26



951 Physician Exam Stool
Avant Taupe
AV 132



201 Arm Chair
Simplicity Citidal
SP 45



Casework Laminate



Essentials Casework
Pinta Maple

Top Surface

Wilsonart® Laminate
4893-60 Tumbled Mosaic



PRODUCTS IN GENERAL PRACTICE EXAM ROOM:

420 Exam Bed with three pass-through drawers, two storage drawers, pull-out step, encompasses a five-position continuous lock stirrups, pull-out leg rest with easy access integrated treatment tray and standard Foghorn powdercoat finish; **951** Physician Exam Stool with single lever release and black composite base; **201** Arm Chair with wall saver legs; **120** Instrument Stand with dual post and stainless steel tray; **500** Economy Pedestal Style Gooseneck Lamp; **Essentials** Casework include **3614-DDWC-DL** Double Door Wall Cabinet with locks; **3624-DDSC-DL** Double Door Sink Cabinet with locks; **24-LTT-R** Lap Top Computer Tray; **3724-T** Laminate Top; **37-BS** Laminate Back Splash; **SSF1515** Stainless Steel Sink with 4" wrist paddle operated faucet.



BARRIER FREE EXAM ROOMS



CARDIOLOGY
ENDOCRINOLOGY
GERIATRICS
HEMATOLOGY
NEUROLOGY
ONCOLOGY

For the physicians that focus on geriatric or special needs patients, this exam table offers easy access and adjustable height capability.

Lowest position is wheel chair height eliminating the need for staff to lift, which reduces potential injury to patient or caregiver. The electromechanical drive provides a smooth, quiet motion keeping the patient calm prior to the initial exam, allowing a better baseline reading. DC power utilizes less electricity, which makes this unit more efficient. A hand and foot control gives the caregiver their own preferred method for operating the table. Another important feature is the treatment tray, which may be accessed with the foot rest in or out.

*The Pulse⁺plus Casework adds all the needed storage including drawers, door cabinets, ADA sink access, bar rail access storage and wardrobe. This casework collection offers much more than storage. In the ever changing environment of medicine, Pulse⁺plus is both modular and reconfigurable. This means that as your practice needs to change or move; these cabinets can be reconfigured to fit into another exam room. A long term answer to growth and change. **Let Intensa help you think ahead!***



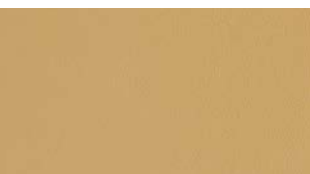
Sherwin-Williams Paint

SW 6401
Independent Gold



CF Stinson Textiles

460-PAB Power Exam Table
Natural World Marigold
NTL 23



241 Bariatric Arm Chair
Rialto Sauterne
RIA 30



972-B Physician Exam Stool
Scout Lime
SCO 50



Casework Laminate

Pulse Plus Casework
Clark Cherry



Top Surface

LG Hausys
HI-MACS® Galaxy
Pluto T005 Solid Surface

PRODUCTS IN BARRIER FREE EXAM ROOM:

460-PAB High/Low Power Exam Table with power assisted back, additional foot control, encompasses a five-position continuous lock stirrups, pull-out leg rest with easy access integrated treatment tray, pedestal base with electromechanical drive and standard Foghorn powdercoat finish; **972-B** Physician Exam Stool with D-handle release with back rest, flat aluminum base with black plastic toe caps; **241** Bariatric Arm Chair with wall saver legs; **120** Instrument Stand with dual post and stainless steel tray; **Pulse Plus** Reconfigurable Casework includes mounting system, **PPWC181618-L** (2), **PPWC181618-R** (1) Wall Cabinets; **PPSC181618KNC** Sink Cabinet; **PPDF181618A** Three Drawer Base Cabinet, **PPHC181618-L** Base Cabinet; **PPWDC181660-L** Wardrobe Cabinet with mirror, **PPBP1927** (2) Back Panels; **PP5517TSS** Solid Surface Top; **PP55BSSS** Solid Surface Back Splash; **SSF1515** Stainless Steel Sink with 4" wrist paddle operated faucet.





STANDARD EXAM ROOMS



CHIROPRACTIC
GASTROENTEROLOGY
NUTRITION
ORTHOPEDIC
RHEUMATOLOGY
SCHOOL HEALTH
SPORTS MEDICINE
PHYSICAL THERAPY

Even the Standard Exam Room can be uniquely designed with the modular and reconfigurable **Pulse^{plus}** Casework. This unit includes two hanging back panels, wall rails for open access, and a storage cabinet with two fixed shelves and two adjustable shelves. All of these units are attached to the “CORE WALL”, which is the aluminum rail system that allows the unit to be relocated. It has horizontal adjustments for stud mounting and seismic vertical mounting.

This type of “CORE WALL” mounting system is beneficial because it can be removed and reconfigured in another exam room. If retrofitting becomes necessary, it saves the clinics and doctors additional costs and lead time

The physicians stool has a custom embossing. Intensa has a special program that offers any type of logo or specific lettering embossed on vinyl seating such as the guest chairs or the physician’s stool.

One more way Intensa can make your exam room special!



CORE WALL attaches to wall as one unit.



All components of Casework attach to CORE WALL.









Sherwin-Williams Paint

SW 7065
Argos

CF Stinson Textiles

415DD Treatment Exam Table
Dodgeball Carom
DB 103

951 Physician Exam Stool
Matrix Galaxy
MA 119

241 Bariatric Arm Chair
Matrix Mystic
MA 118

Casework Laminate

Pulse Plus Casework
Tenino Gray

Top Surface

Wilsonart® Laminate
61 Brushed Aluminum RTF

PRODUCTS IN STANDARD EXAM ROOM:

415DD Treatment Exam Table with adjustable contoured back, shelf and two drawers and standard Foghorn powdercoate finish; **951** Physician Exam Stool with single lever release and black composite base; **241** Bariatric Arm Chair with wall saver legs; **101** Chrome Step Stool with handrail; **Pulse Plus** Reconfigurable Casework includes mounting system, **PPSCD181618-L** Sink Cabinet with single door access; **PPHC181618-R**, **PPHC181618-L** Base Cabinets; **PPTSC181660-R** Storage Cabinet with two fixed shelves and two adjustable shelves, **PPBP2737** (2) Back Panels; **PP5517T** Rigid Thermofoil Top; **PP55BS** Rigid Thermofoil Back Splash; **SSF1515** Stainless Steel Sink with 4" wrist paddle operated faucet; **6-TRCO** 6" Round Trash Ring Grommet; **NOV973+1213**, (2) **NOV973+0612** Slat Rails; **NOV961+0519** Wall Mount Post; **NOV963+0119** Articulating Arm Carriage; **NOV964+1019+005** Keyboard Holder.




FLEXIBLE EXAM ROOMS



Flexible Exam Rooms need to be just that...**flexible**. This room utilizes rich warm wood tones and color blocking; making a statement for any specialty focus.

The High/Low Power Table becomes the focal point of the room with its multicolored pattern. The colors woven into the pattern are used on the walls, caseworks and seating for a rich sophisticated environment.

Our **Pulse**  Casework is unique because it is mounted to the wall using a mounting system. It has an open back area that a rail system may be used to mount dispensers and containers for easy access.

*Special options are items such as a wardrobe that has an extra privacy panel, which extends past the door to create a private area for dressing. The interior of the wardrobe has a mirror, hooks, and a separate shelf for shoes and purses. **Intensa always adds those extra features you're not expecting!***



Sherwin-Williams Paint

SW 6417
Tupelo Tree



SW 6415
Hearts of Palm



CF Stinson Textiles

460 Power Exam Table
Abacus Shale
ABA 21



972-CB Physician Exam Stool
Tessuto Lime
Tes 22



241 Bariatric Arm Chair
Matrix Mystic
MA 118



Casework Laminate

Pulse Plus Casework
Wild Apple



Top Surface

Hi-Macs Classics
Coswall G125

PRODUCTS IN FLEXIBLE EXAM ROOM:

460 High/Low Power Table with power assisted back, encompasses five-position continuous lock stirrups, pull-out leg rest with easy access integrated treatment tray, pedestal base with electromechanical drive and standard Foghorn powdercoat finish; **972-CB** Physician Exam Stool with D-handle release, height adjustable crescent back rest, flat aluminum base with black plastic toe caps; **241** Bariatric Arm Chair with wall saver legs; **503** Mobile Exam Light with gooseneck arm; **Pulse** Reconfigurable Casework includes mounting system, **PWC181618-L** (2), **PWC181618-R** (1) Wall Cabinets; **GB-1S** Small Glove Box, **GB-1M** Medium Glove Box, **GB-1L** Large Glove Box; **PSC181618** Sink Cabinet; **PHC181618-R**, **PHC181618-L** Base Cabinets; **PWDC181660-R** Wardrobe Cabinet with mirror; **PBP1927** (2) Back Panels; **NOV973+0612** Slat Rail; **P5517TSS** Solid Surface Top; **P55BSSS** Solid Surface Back Splash; **SSF1515** Stainless Steel Sink with 4" wrist paddle operated faucet; **6-TRCO** 6" Round Trash Ring Grommet; **PWMLTS** Wall Mount Lap Top Station.





BARIATRIC EXAM ROOMS

BARIATRIC PRACTICE



Overweight and obesity are rising medical concerns of pandemic proportions. Many institutes of health are including this as part of their focus in new practices.

Intensa can offer you a full range of bariatric products including blood drawing chairs, physicians stools, guest seating, and the Bariatric Exam Table. All of these bariatric products are rated for weight up to 1200 lbs.

*The Bariatric Exam Table has quad electromechanical columns. It starts at sitting height, goes up to gurney height and extends to physician preferred exam height. The power assisted back is infinitely adjustable for maximum patient comfort and adds additional security during patient movement. In case of emergency the bariatric exam table offers Trendelenburg and reverse Trendelenburg functions. **Intensa is serious about supporting Bariatric needs!***









Sherwin-Williams Paint

SW 6494
Lakeshore

SW 6127
Ivoire

CF Stinson Textiles

470 Bariatric Exam Table
Auberge Whisper
AUB 54

240/241 Bariatric Side Chairs
Tender Tranquil
TND 55

925 Bariatric Physician Stool
Avant Parchment
AV 123

Casework Laminate

Essentials Casework
Jubilee Cherry

Top Surface

Wilsonart® Laminate
49933-38 Cream Fizz

PRODUCTS IN BARIATRIC EXAM ROOM:

470 Bariatric Exam Table with quad electromechanical columns, lift capacity 1000 lbs., handset operations include power assisted back, height adjustment, Trendelenburg and Reverse Trendelenburg positions and standard Foghorn powdercoat finish; **925** Bariatric Exam Stool with heavy duty polished aluminum metal base at fixed height of 19"; **241** Bariatric Arm Chair with wall saver legs; **240** Bariatric Armless Chair with wall saver legs; **500** Economy Pedestal Style Gooseneck Lamp; **Essentials** Casework includes **3614-DDWC-SL** Double Door Wall Cabinet with lock; **3624-DDSC-DL** Double Door Sink Cabinet with lock; **24-LTT-L** Lap Top Computer Tray; **3718-T** Laminate Top; **37-BS** Laminate Back Splash; **SSF1515** Stainless Steel Sink with 4" wrist paddle operated faucet; and 6-TRCO 6" Round Trash Ring Grommet.



WOMEN'S MEDICAL SPECIALTIES EXAM ROOMS



GYNECOLOGY

OBSTETRICS

ONCOLOGY

Is it the old cliché that pink is for girls? Well, this décor is definitely for women, creating an environment of embracing warmth that would welcome and put anyone at ease.

The Pulse^{plus} Casework make for a clean look, and provides ample storage space for your practice. A separate wardrobe allows for privacy when changing and safety for personal property during the exam. The maple laminate blends so well with the cream walls and yet the pink physicians wall stands out, which denotes his/hers area of workspace.

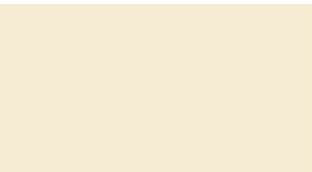
*The exam bed is shown in a special sewing technique. The designer wanted to have curves of vanilla cream to move through the contemporary pink cushion to soften the look. They also wanted the physician's stool to have both colors in the sewing. Intensa works with all of their interior designers to achieve every detail in their design, such as this two-tone upholstery. **Intensa will make your designs come alive!***





Sherwin-Williams Paint

SW 6583
In the Pink



SW 6126
Navajo White



Naugahyde®

420-EO-DW Exam Bed
243 Arm Chair
972-CB Physician Exam Stool (top)
Spirit Millennium Pink
US 503



420-EO-DW Exam Bed
972-CB Physician Exam Stool
Spirit Millennium Ivory
US 500



Casework Laminate

Pulse Plus Casework
Tenino Oak



Top Surface

Hi-Macs Classic
Moon Haze G1 18

PRODUCTS IN WOMEN'S EXAM ROOM:

420-2T-EO-DW Exam Bed with three pass-through drawers, two storage drawers, pull-out step, leg rest with easy access integrated treatment tray, two-tone upholstered top and standard Foghorn powdercoat finish; **972-2T-CB** Physician Exam Stool with D-handle release, height adjustable crescent back rest, flat aluminum base with black plastic toe caps; **243** Arm Chair with wall saver legs; **503** Mobile Exam Lamp with gooseneck arm; **Pulse Plus** Reconfigurable Casework includes mounting system, **PPWC181618-L** (2), **PPWC181618-R** (1) Wall Cabinets; **PPSCD181618-L** Sink Cabinet with single door access; **PPHC181618-R-SL**, **PPHC181618-L** Base Cabinets; **PWDC181660-R** Free Standing Wardrobe with mirror; **PPBP2725** (2) Back Panels; **NOV973+0612** Slat Rail; **PP5517TSS** Solid Surface Top; **PP5517BSSS** Solid Surface Back Splash, **SSF1515** Stainless Steel Sink with 4" wrist paddle operated faucet; **6-TRCO** 6" Round Trash Ring Grommet.





PHLEBOTOMY / BLOOD DRAWING ROOMS

LABORATORY PHLEBOTOMY



Intensa believes that having lab work done should be experienced in a pleasant atmosphere. Color is a great way to segment areas of work space; the two color ways are used to divide the waiting room from the procedure area.

The reception area has both a standard arm chair and a bariatric armless chair, so all types of patients may be accommodated. Be sure to leave room in the waiting area for wheel chair access. Fabric selection is also important. A visually alluring, textured vinyl is used to make the seat look rich and inviting.

*This setting shows how the **Essentials** Casework can be used in conjunction with the wall mounted access rail to hold all of the lab materials. The support table matches the cabinetry and can be moved where needed. With locking casters, this table is much more than the typical metal instruments carts, blending durability and design for those areas that need a little higher end function.*

Intensa has a bit of everything to meet your design needs!









Sherwin-Williams Paint

SW 6240
Windy Blue



SW 6120
Believable Buff



CF Stinson Textiles

620 Bariatric Blood Drawing Chair
610 Blood Drawing Chair
Affinity Twilight
AFF 12



240 Bariatric Armless Chair
243 Arm Chair
Affinity Concord
AFF 06



Casework Laminate

Essentials Casework
Maple



Top Surface

Wilsonart® Laminate
4746-60 Woolamai Brush



PRODUCTS IN PLEBOTOMY ROOM:

620 Bariatric Blood Drawing Chair with height adjustable padded arm rest, height adjustable left side flip arm; **610** Blood Drawing Chair with height adjustable padded arm rest, height adjustable right side flip arm; **243** Arm Chair with wall saver legs; **240** Bariatric Armless Chair with wall saver legs; **Essentials** Casework includes **3614-DDWC-DL** Double Door Wall Cabinet with one shelf and double door lock; **3618-4DR-GL** Base Cabinet with four drawers and gang lock); **3718-T** Laminate Top; **37-BS** Laminate Back Splash; **NOV973+1213** Slat Rail; **ST** Support Table (shown with casters on page 29 - **MST** Mobile Support Table).

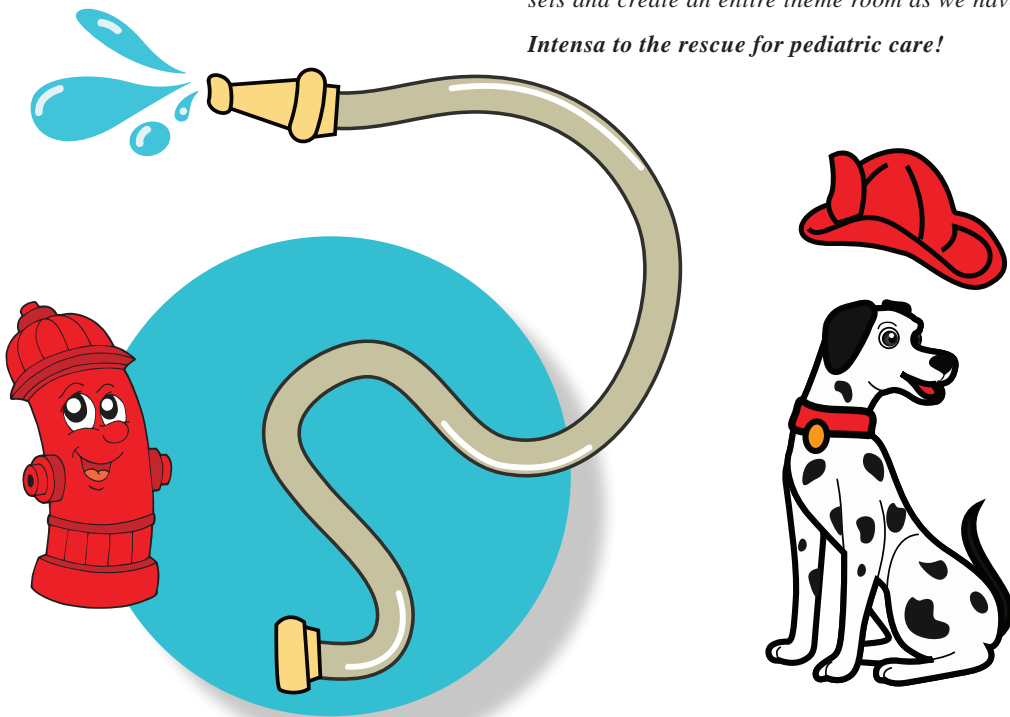


FIRE TRUCK THEME PEDIATRIC EXAM ROOMS



What child would not want to go see their doctor when they know they can sit on a Fire Truck Exam Table? It is a proven fact that children respond to their environment. As a healthcare provider in the pediatric arena, it not only entices your patient but also makes your time with them more productive and pleasant.

Intensa offers this Fire Truck Pediatric Package. It includes an exam bed with all options available and a full fire truck wrap on all four sides. In addition, a package of self-adhesive wall decals are available of the images you see on this page. You can order several sets and create an entire theme room as we have done in our settings. Intensa to the rescue for pediatric care!



	<p>Sherwin-Williams Paint</p> <p>SW 7005 Pure White</p>
	<p>SW 6689 Overjoy</p>
	<p>CF Stinson Textiles</p> <p>420 Fire Truck Exam Bed Rally Royal RAL 37</p>
	<p>951 Physician Exam Stool Élan-HC Sauterne NLE 52</p>
	<p>200 Armless Chair 201 Arm Chair Avant American Beauty AV 109</p>
	<p>Casework Laminate</p> <p>Essentials Casework Maple</p>
	<p>Top Surface</p> <p>Wilsonart® Laminate D417-60 Lapis Blue</p>

PRODUCTS IN FIRE TRUCK EXAM ROOM:

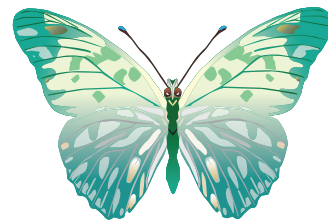
420FT Fire Truck Exam Bed with three pass-through drawers, two storage drawers, pull-out step, encompasses a five-position continuous lock stirrup, pull-out leg rest with easy access integrated treatment tray and standard Foghorn powdercoat finish; **951** Exam Stool with single lever release and black composite base; **200** Armless Chair with wall saver legs; **201** Arm Chair with wall saver legs; **Essentials** Casework includes **3614-DDWC-DL** Double Door Wall Cabinet with lock; **3624-DDSC-DL** Double Door Sink Cabinet with lock; **24-LTT-R** Lap Top Computer Tray; **3724-T** Laminate Top; **37-BS** Laminate Back Splash; **SSF1515** Stainless Steel Sink with 4" wrist paddle operated faucet; **6-TRCO** 6" Round Trash Ring Grommet; and **FTDS** 6-piece Fire Truck Decal Set.





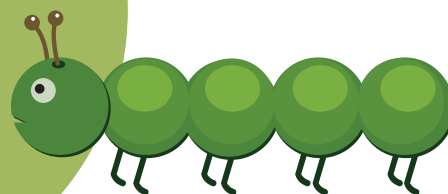
LADYBUG THEME PEDIATRIC EXAM ROOM

PEDIATRICS
FAMILY PRACTICE



If you are looking for a softer appeal for a younger age group, the Ladybug may have the perfect image. Daisies blooming out of grasses and ferns filled with delicate ladybugs clinging to their stems. The rich blues of the sky, striking variation of greens in contrast to the bright yellow centers of the daisies will make this exam table pop in any environment.

Along with the exam bed, a package of self-adhesive wall decals are available. All of the creatures, leaves and flowers on this page make up the collection. You can definitely have fun with the march of the centipedes lined up on a wall. Or have several daisies blooming out of a half-painted green wall. **Intensa brings out your creativity!**









Sherwin-Williams Paint

SW 7005
Pure White

SW 6239
Dancing Green

CF Stinson Textiles

420 Ladybug Exam Bed
Élan-HC Pearl
NLE 44

951 Physician Exam Stool
Rally American Beauty
RAL 39

200 Armless Chair
201 Arm Chair
Élan-HC Pesto
NLC 41

Casework Laminate

Essentials Casework
Columbus Maple

Top Surface

Wilsonart® Laminate
4918-60 Sprout

PRODUCTS IN LADYBUG EXAM ROOM:

420LB Ladybug Exam Bed with three pass-through drawers, two storage drawers, pull-out step, encompasses a five-position continuous lock stirrup, pull-out leg rest with easy access integrated treatment tray and standard Foghorn powdercoat finish; **951** Exam Stool with single lever release and black composite base; **200** Armless Chair with wall saver legs; **201** Arm Chair with wall saver legs; **Essentials** Casework includes **3614-DDWC-DL** Double Door Wall Cabinet with lock; **3624-DDSC-DL** Double Door Sink Cabinet with lock; **24-LTT-R** Lap Top Computer Tray; **3724-T** Laminate Top; **37-BS** Laminate Back Splash; **SSF1515** Stainless Steel Sink with 4" wrist paddle operated faucet; **6-TRCO** 6" Round Trash Ring Grommet; and **LBDS** 10-piece Ladybug Decal Set.



JUNGLE THEME PEDIATRIC EXAM ROOMS



PEDIATRICS
FAMILY PRACTICE



If your patients tend to have a wild streak in them, then to the Jungle we shall go. Here the exam bed is wrapped with a bright and colorful scene of an elephant in the lush green tropics. He is shown on all four sides with his back side showing a little pink bow on his tail. As you can see when you open the drawers the wrap is on the pass-through drawers, front drawers and even the side of the step.

*A set of wall decals of the illustrations on this page are also available. Several sets of decals were used to show a monkey vine across the wall. The casework in all of the pediatric rooms are from the **Essentials** Casework Collection. The frames of the cases are all in white laminate, and only the doors and top surfaces are changed to match the theme decor. This is a great way to save cost when planning several exam rooms in a clinic. To specify various laminates on the doors and tops is a minimal way to get many different great looks. **Intensa is always finding ways to save you money!***



	<p>Sherwin-Williams Paint</p> <p>SW 7005 Pure White</p>
	<p>SW 7066 Gray Matters</p>
	<p>CF Stinson Textiles</p> <p>420 Jungle Exam Bed Bistro Grasshopper BT 209</p>
	<p>951 Physician Exam Stool Rally American Beauty RAL 39</p>
	<p>200 Armless Chair 201 Arm Chair Bistro Citron BT 201</p>
	<p>Casework Laminate</p> <p>Essentials Casework Tenino Grey</p>
	<p>Top Surface</p> <p>Wilsonart® Laminate 4945-38 Organic Cotton</p>

PRODUCTS IN JUNGLE EXAM ROOM:

420JU Jungle Exam Bed with three pass-through drawers, two storage drawers, pull-out step, encompasses a five-position continuous lock stirrup, pull-out leg rest with easy access integrated treatment tray and standard Foghorn powdercoat finish; **951** Exam Stool with single lever release and black composite base; **200** Armless Chair with wall saver legs; **201** Arm Chair with wall saver legs; **Essentials** Casework includes **3614-DDWC-DL** Double Door Wall Cabinet with lock; **3624-DDSC-DL** Double Door Sink Cabinet with lock; **24-LTT-L** Lap Top Computer Tray; **3724-T** Laminate Top; **37-BS** Laminate Back Splash; **SSF1515** Stainless Steel Sink with 4" wrist paddle operated faucet; **6-TRCO** 6" Round Trash Ring Grommet; and **JUDS** 7-piece Jungle Decal Set.





OCEAN THEME PEDIATRIC EXAM ROOM

PEDIATRICS
FAMILY PRACTICE



One of the most popular themes with a wide range of age groups and both genders is the Ocean. This is the most colorful of our bed wraps. The exam bed has a clown fish image on all four sides with brightly colored corals and sea urchins.

In this exam room the walls are painted with graphic interpretations of waves to add to the theme. Several packages of wall decals were used to create an illusion of an aquarium throughout the room. Vinyl for the bed top and physician's stool was selected in the same sea water blue as the wall. The guest chairs pick up on the colors of the creatures in the aquarium so they will be a bright contrast to the blue sea wall. What an exciting room for your young patient to enter.

Intensa has more ideas...just call!









Sherwin-Williams Paint

SW 7005
Pure White

SW 6239
Flyway

CF Stinson Textiles

420 Ocean Exam Bed
951 Physician Exam Stool
Arioso Sicily
ARI 224

201 Arm Chair
Arioso Sienna
ARI 216

200 Armless Chair
Arioso Fresca
ARI 217

Casework Laminate

Essentials Casework
White

Top Surface

Wilsonart® Laminate
4934-38 Aqua Fizz

PRODUCTS IN OCEAN EXAM ROOM:

420OC Ocean Exam Bed with three pass-through drawers, two storage drawers, pull-out step, encompasses a five-position continuous lock stirrup, pull-out leg rest with easy access integrated treatment tray and standard Foghorn powdercoat finish; **951** Exam Stool with single lever release and black composite base; **200** Armless Chair with wall saver legs; **201** Arm Chair with wall saver legs; **Essentials** Casework includes **3614-DDWC-DL** Double Door Wall Cabinet with lock; **3624-DDSC-DL** Double Door Sink Cabinet with lock; **24-LTT-L** Lap Top Computer Tray; **3724-T** Laminate Top; **37-BS** Laminate Back Splash; **SSF1515** Stainless Steel Sink with 4" wrist paddle operated faucet; **6-TRCO** 6" Round Trash Ring Grommet; and **OCDS** 13-piece Ocean Decal Set.

894 CHAIR — STOW-AWAY LABORATORY CHAIR



Intensa offers a wide range of laboratory stools with many typical features. With this new model we have surpassed any current lab seating in the market.

It is a chair - seat height 22"...it is a stool - seat height 29.5"...best of all it folds and stores under the counter.

The **894 Chair** gives you much more than any typical lab seating. It has a mesh back that conforms to different body types, while also keeping them cool. A lumbar adjusts to support each specific user. Polyurethane arms adjust 3.5" in height to user's preference with a simple touch of a button. Standard height adjustment and tension control are easily accessible. The nylon composite chair frame is shown with a vinyl upholstered seat. It is also available with a urethane seat as model **884 Chair**.

If you need to clean up your lab with a stow-away chair, try the new economical 894 Chair from Intensa!







RT-75L — replacement top for
Ritter/Midmark® 75L



RT-104 — replacement top for
Ritter/Midmark® 104



RT-204 — replacement top for
Ritter/Midmark® 204



RT-404 — replacement top for
Ritter/Midmark® 404



RT-405 — replacement top for
Ritter/Midmark® 405



RT-411 — replacement top for
Ritter/Midmark® 411



RECYCLE...a buzz word or a practical application in todays throw away society? The market for primary care continues to grow and change. Healthcare cost continue to rise and competition for patient care is growing, so facilities are retrofitting to keep up with these demands. With this expansion comes the question of “*what to do with existing equipment?*”

One avenue to combat both cost and competition is to utilize **Intensa’s top replacement program for existing exam tables**. They can provide tops that meet original equipment manufacturers specifications. This is most important and is preferred over covering old foam that may not be sanitary.

Intensa can also offer the same wide range of colors and patterns to revitalize your exam room to create a new design environment...at a fraction of the cost for new exam tables.

This method of renewing medical office buildings not only helps the environment by recycling the existing equipment but also reduces the cost for expansion of the physicians practice and providing a competitive advantage for increase profits.

So when opportunities for expansion arise, budgets are tight, and time is critical...contact Intensa for a tried and true method to make your exam room look new without the cost of new!

Intensa...

- ✓ offers unlimited textile selections providing the healthcare community an outlet to create new exam room environments
- ✓ accepts all preapproved COM for all products
- ✓ is an industry leader with 5-Year Warranty on all exam beds and 10-Year Warranty on all seating
- ✓ has exclusive themed exam table designs for pediatrics
- ✓ offers extensive healthcare seating with multiple options
- ✓ bariatric series including exam tables, blood draw seating, stools and guest seating rated up to 1200 lbs.
- ✓ three casework designs that meet all applications: Essentials, Pulse and Pulse Plus
- ✓ auxiliary equipment to facilitate complete exam rooms
- ✓ exemplary customer service and lead times
- ✓ GSA Contract V 797-D-30123 Group 65
- ✓ privately-held, small business



Intensa, Inc.
P.O. Box 5981
High Point, NC 27262
(888) 636-2660
sales@intensa.net
www.intensa.net